

**PCI-104 SBC with AMD LX800 Processor 500Mhz,
CRT/LCD, LAN,USB2.0, CFII**

PM-LX-800

Quick Installation Guide

Version 1.0

Jun. 28, 2006

Package Contents

PM-LX-800 package includes the following items:

- 1 x PM-LX-800 Single Board Computer
- 1 x IDE Flat 44p/44p Cable (P/N:32200-000009-RS)
- 2 x RS232 cable (P/N:32200-000049-RS)
- 1 x VGA cable (P/N:3200-0033804-RS)
- 1 x LAN cable (P/N: P/N:32000-055702-RS)
- 1 x KB/MS cable (P/N:32000-023800-RS)
- 1 x USB cable (P/N:32000-070300-RS)
- 1x power cable P/N: 32100-130300-RS
- 1 x Mini Jumper pack
- 1 x CD-ROM Driver
- 1 x QIG



©2006 Copyright by IEI Technology corp.
All rights reserved.

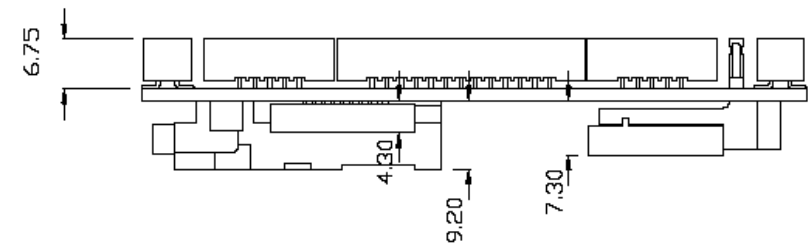
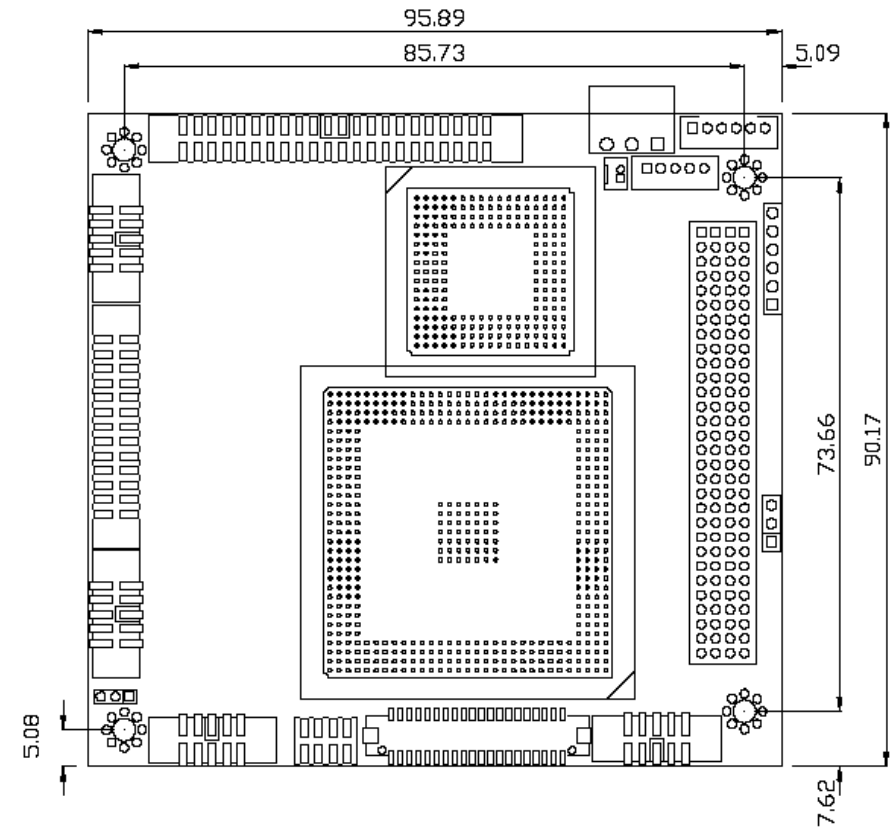
Specifications

- CPU: AMD® Geode LX-800 processor
- System Chipset: AMD® CS5536
- BIOS: Award BIOS Label
- System memory: 1 x DDR 200 Pin DDR333/400 SO-DIMM support up to 1GB
- Ethernet: Realtek RTL8100C for 10/100 Mbps
- I/O

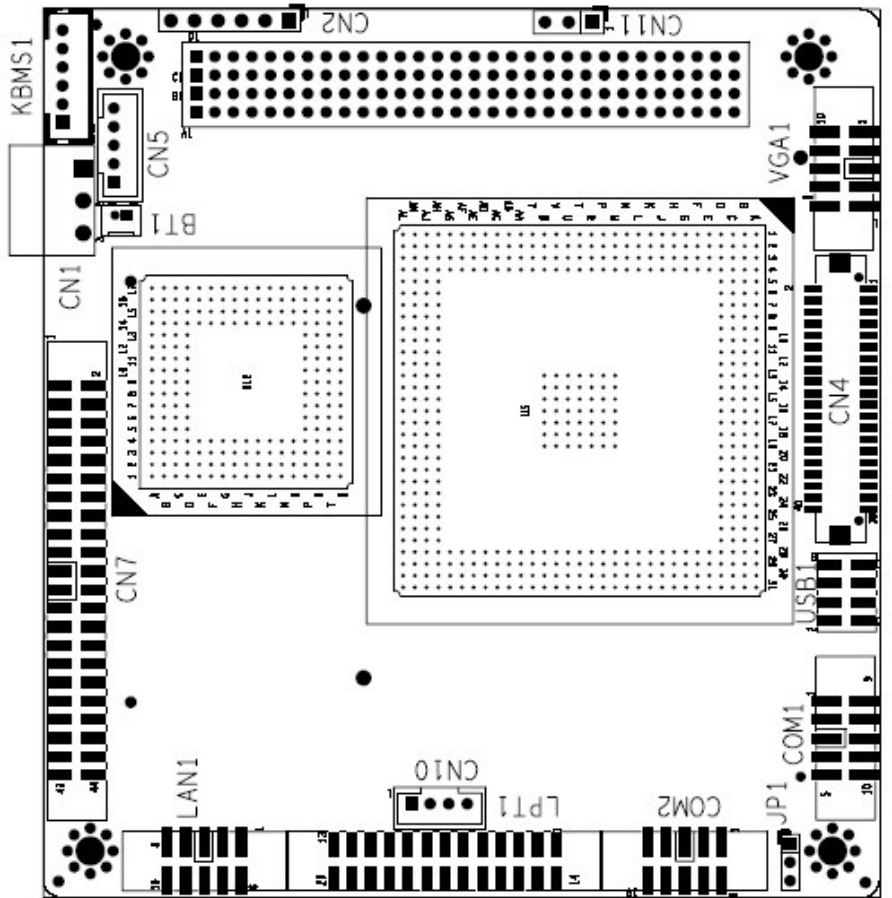
I/O Interface:

- 2 x USB2.0
- 1 x LPT
- 2 x RS232
- 1 x PS/2 KB/MS
- 1 x IDE

- Super I/O: W83627EHG
- Audio: AC'97 Codec Realtek ALC202A
- Display:
Integrated in LX800, Support CRT and 24-bit TTLdisplays
- Watchdog timer: Software programmable supports 1~255 sec. system reset
- Power Supply: AT power support
- Power Consumption:
+5V@1.13A(LX800-500Mhz, DDR 400/1G RAM)
- Temperature: 0 ~ 60°C (32 ~ 140°F)
- Humidity: Operation: 5% ~ 95%
- Dimension: 95mm(L) x 95mm(W)
- Weight: NW110g, GW:500g



Layout



Ordering Information

Standard:

PM-LX-800-R10

PCI-104 SBC with AMD LX800 Processor 500Mhz, CRT/LCD, LAN,USB2.0, CFII

Jumpers

JP1: Com3 RS422 / RS485 Selector

JP1	Description
1-2	RS422
2-3	RS485

BT1: Battery Connector

PIN	Description
1	BAT+
2	GND

CN1: +12V & +5V input Connector

PIN	DESCRIPTION
1	VCC12
2	GND
3	VCC5

CN11: -12V input Connector

PIN	Description
1	N/C
2	GND
3	-12V

CN2: LED Connector

PIN	DESCRIPTION
1	RESET1
2	RESET2
3	VCC5 LED+
4	GND
5	HDD LED+
6	HDD LED-

CN10: Serial Port3 Connector (Pin-header 1x4 2.0mm)

PIN	Description
1	RXD485-
3	RXD485+
5	TXD485+
7	TXD485-

COM1,COM2: Serial Port1 Connector (Box-header 5x2 2.0mm)			
PIN NO.	DESCRIPTION	PIN NO.	DESCRIPTION
1	DCD#	6	DSR#
2	RX	7	RTS#
3	TX	8	CTS#
4	DTR#	9	RI#
5	GND	10	GND

LAN1: LAN Connector (Pin-header 5x2 2.0mm)			
PIN NO.	DESCRIPTION	PIN NO.	DESCRIPTION
1	VCC3.3	6	Active
2	RX+	7	RX-
3	Link	8	GND
4	N/C	9	GND
5	TX+	10	TX+

KBMS1: Keyboard & Mouse Connector	
PIN	Description
1	VCC5
2	MOUSE DATA
3	MOUSE CLOCK
4	KEYBOARD DATA
5	KEYBOARD CLOCK
6	GND

CN5: LCD Inverter Connector	
PIN	DESCRIPTION
1	LCD_BKLTCTL
2	GROUND
3	VCC12
4	GROUND
5	LCD_BKLEN

USB1: Internal USB Connector			
PIN NO.	DESCRIPTION	PIN NO.	DESCRIPTION
1	USBVCC1	2	GND
3	D1F-	4	D2F+
5	D1F+	6	D2F-
7	GND	8	USBVCC1

CN4: LCD Interface Connector			
PIN	Description	PIN	Description
2	LCDVCC5	1	LCDVCC5
4	GND	3	GND
6	LCDVCC3	5	LCDVCC3
8	GND	7	N/C
10	B1	9	B0
12	B3	11	B2
14	B5	13	B4
16	B7	15	B6
18	G1	17	G0
20	G3	19	G2
22	G5	21	G4
24	G7	23	G6
26	R1	25	R0
28	R3	27	R2
30	R5	29	R4
32	R7	31	R6
34	GND	33	GND
36	VSYNC	35	FPCLK
38	HSYNC	37	DISPEN
40	LCDEN	39	N/C

VGA1: 15-pin Female Connector			
PIN	Description	PIN	Description
1	RED	6	DDCCLK
2	GREEN	7	DDCDAT
3	BLUE	8	GND
4	HSYNC	9	GND
5	VSYNC	10	GND